

Custom Playgrounds and Sculptures:

Whether it's a mountain in the city of Paris, a huge nose being used as a slide, a yellow submarine surrounded by fish, a colorful flower pot or maybe even a garden full of fairy tale witches and horse-drawn carriages, our staff will ensure that your dream becomes a reality.

At StuGi, artist Gil Sadeh and our staff design, manufacture and install unique individually designed sculptures and playgrounds.

Our playgrounds draw inspiration from the unique and original fantasy worlds of our children's minds whilst at the same time using elements familiar to them from where they live, learn and play.

Let us show you the wonderful world of StuGi, where we can turn your dreams into reality.



www.stugi.biz



download catalog



Copyright 2018

All materials contained on this book are protected by copyright law and may not be reproduced, distributed, transmitted, displayed or published without the prior written permission of the owner of the content.

StuGi

Urban Art & Design

Custom Playgrounds and Sculptures

Contents

Playgrounds	5
Sculptures	69
Expo Art	89

Playgrounds



TREASURE ISLAND PARK

Beit Dagan

“Treasure Island” is one of the most exciting adventure books and one of the mostly loved by teenagers. Treasure Island Park provides an unforgettable experience of the book’s scenery and adventures.

The challenge was to create elements from the story that can be used to play upon all ages and feel the adventure at the same time. Around the ship and giant octopus the architect created landscapes that represent an island, put sand around the ship and so. Everything is done in order to create an atmosphere of adventure island within the urban landscape.

Landscape Architecture: Kav Banof Ltd



TREASURE ISLAND PARK

Beit Dagan





TREASURE ISLAND PARK

Beit Dagan





TREASURE ISLAND PARK

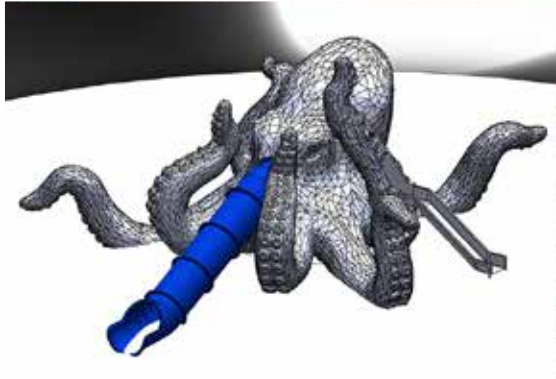
Beit Dagan





TREASURE ISLAND PARK

Beit Dagan





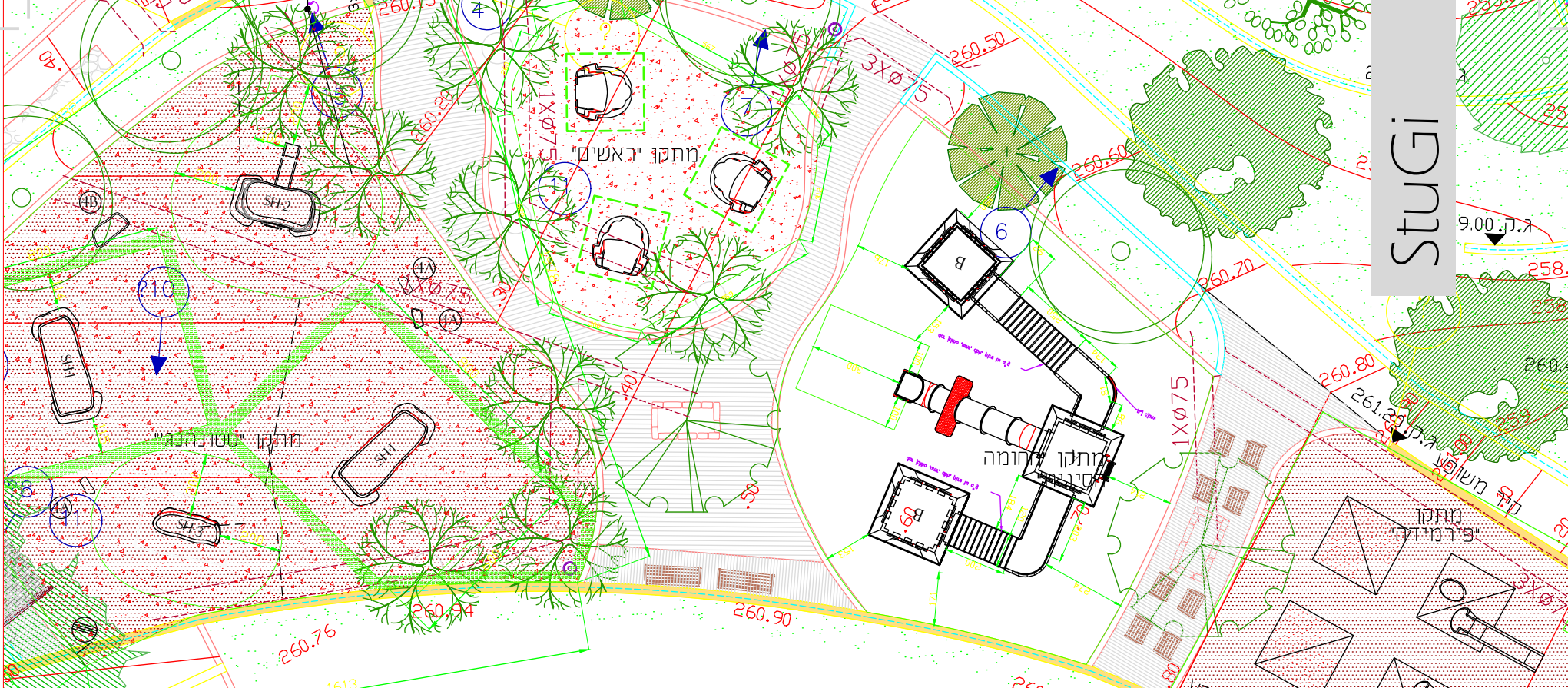
WONDERS OF THE WORLD PARK

Modiin

It all began with one book, “Atlas of Wonders of the World,” and a vision. A school girl asked the mayor of Modiin on a random meeting, to create a park dedicated to the wonders of the world. Our challenge was to translate the vision into reality and add all kind of playground elements into it, in order to create a unique and spectacular park.

The park answers an educational need of getting to know the wonders of the world and the need for a unique playground that attracts children from all over the city with the bonus of having an artistic and colorful play and learning experience.

Landscape Architecture: Dorit Margalit



StuGi



WONDERS OF THE WORLD PARK

Modiin





WONDERS OF THE WORLD PARK

Modiin





WONDERS OF THE WORLD PARK

Modiin





WONDERS OF THE WORLD PARK

Modiin





StuGi
Urban Art & Design
© 2014/2015



OSHILAND PARK

Kfar Saba

The Park Planning was a big challenge - the need to transform a mall in the heart of a commercial area into something beautiful and magical. The goal was to create a colorful new land of imagination and fantasy combined with children's attractions and playground elements.

We provided a turnkey solution for concept, design and building of the whole park. The StuGi team worked in cooperation with the customer in order to create the biggest custom playground in Israel.

The artistic elements include climbing, sliding hiding and imagination challenges that are expressed through an upside down house, a giant dragon, special trees, a boat and much more.

Landscape Architecture: Miller - Blum & CO. environmental
planning ltd.



OSHILAND PARK

Kfar Saba





OSHILAND PARK

Kfar Saba





OSHILAND PARK

Kfar Saba





OSHILAND PARK

Kfar Saba

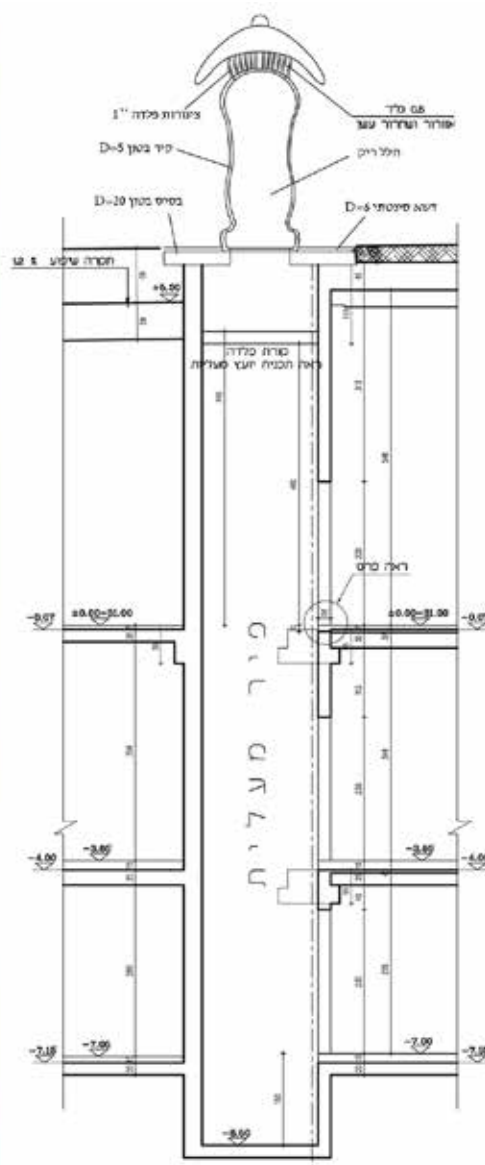




OSHILAND PARK

Kfar Saba





MINI GOLF “WORLD MAP”

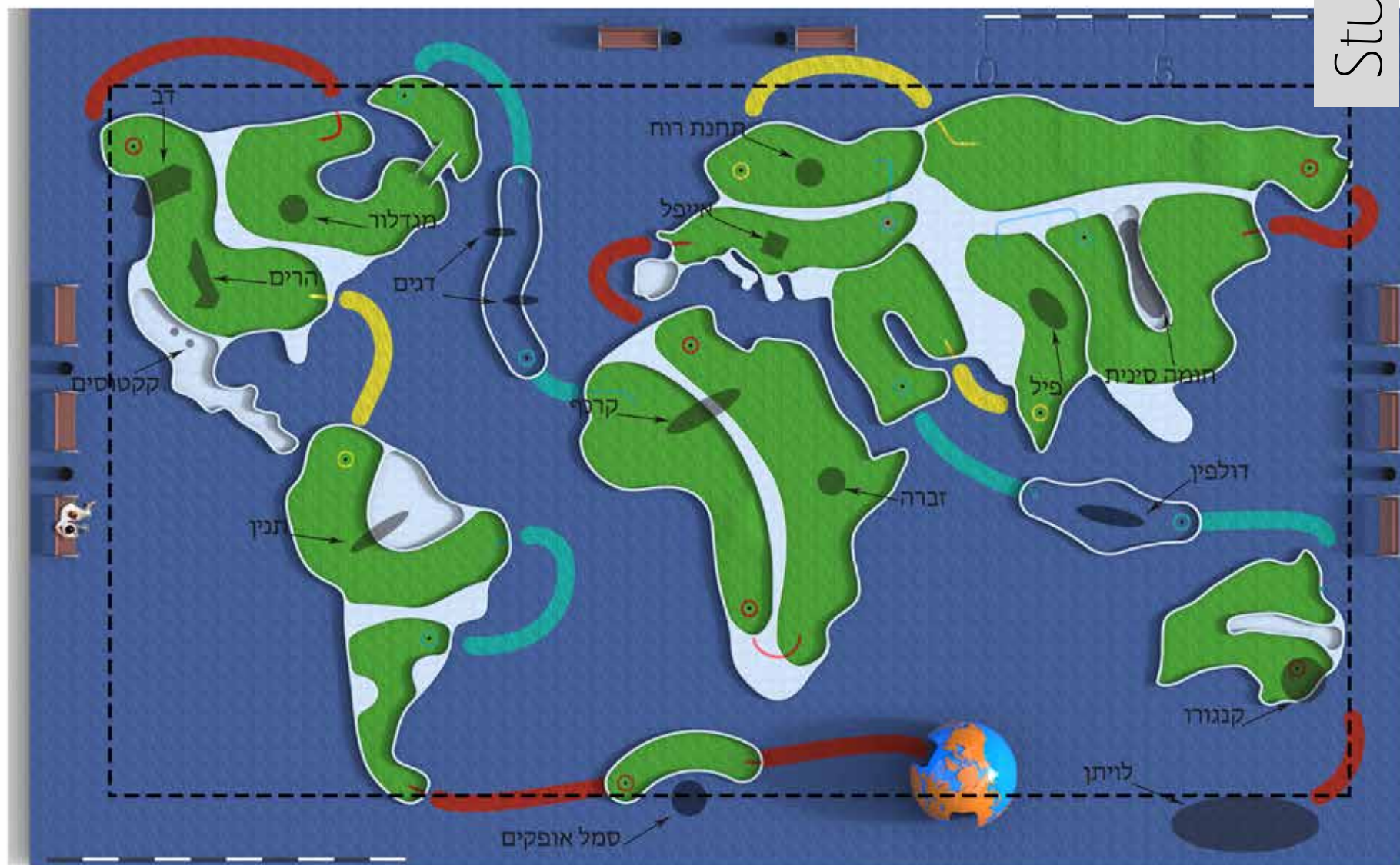
Ofakim

The “World Map” Miniature Golf, is one of the first minigolf courses in Israel open to the general public free of charge. The Mini golf was planned and designed in the shape of the map of the world. The golf tracks are inside the continents with a total length of 186 meters. Inside the tracks we put different sculptures representing each country or area of the world, whether it's an architectural monument, an animal or a symbol.

The minigolf was planned to create a fascinating, educational and fun game experience.

If it's passing the ball under the Eiffel Tower or putting it into the whale's mouth in the Pacific Ocean, minigolf “World Map” is the perfect miniature golf experience for the whole family.

Landscape Architecture Musita Furman.



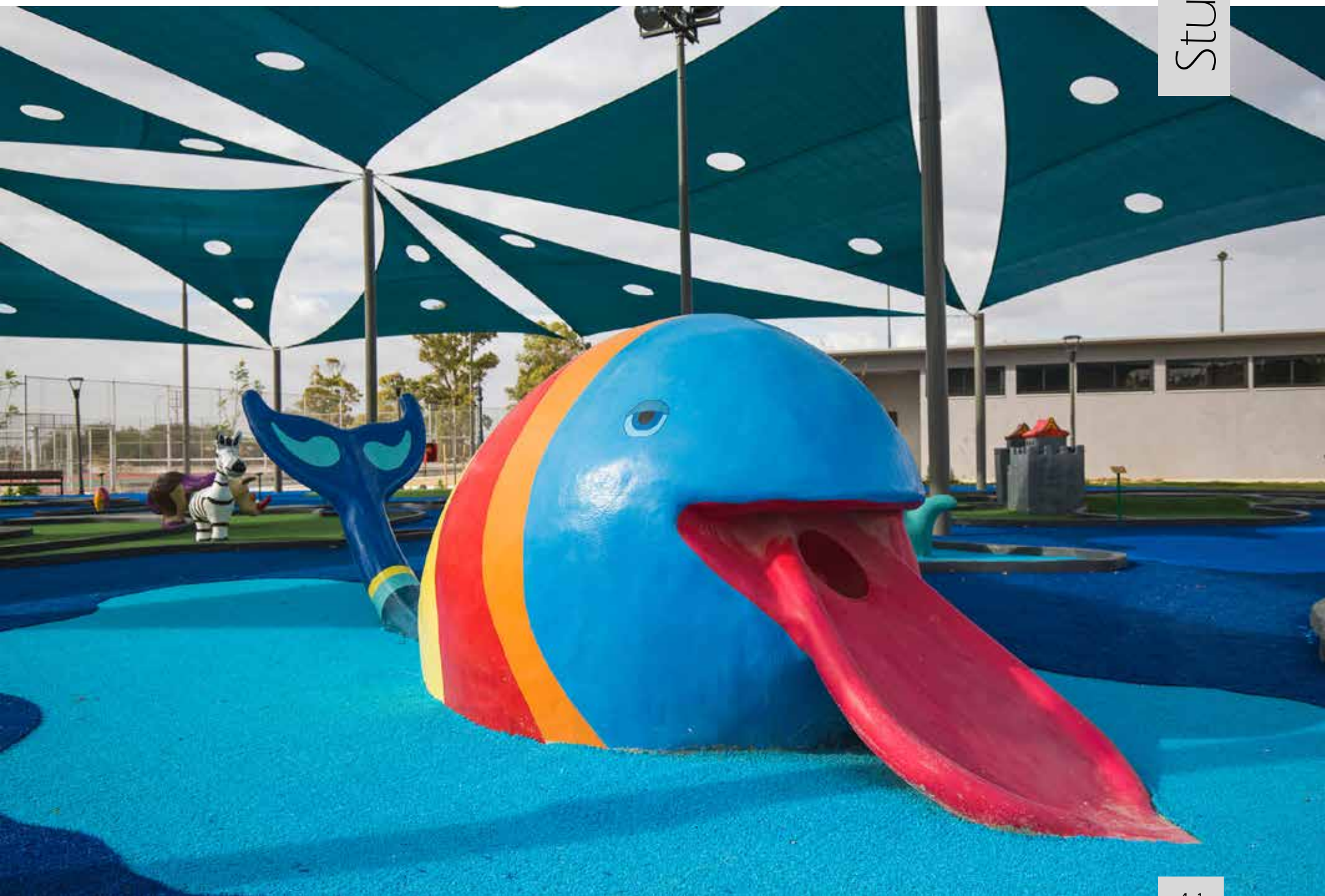
	דשא סינטטי כחול		אזור עם הצללה
	דשא סינטטי ירוק		גומה תיקנית עם סימון
	שבילים צבעונים		סימון תחילת מסלול

מיניגולף
תוכנית כללית

MINI GOLF "WORLD MAP"

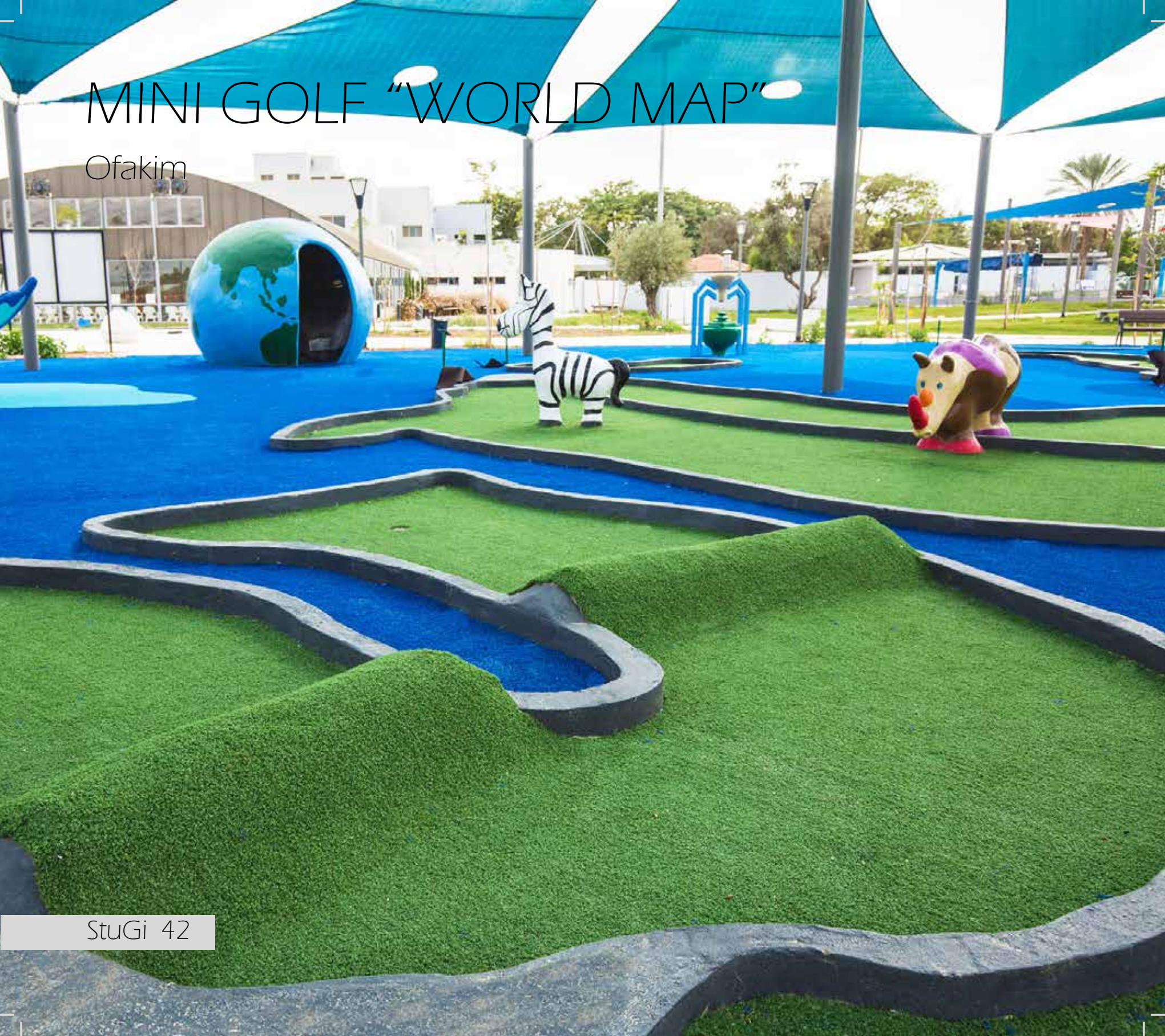
Ofakim

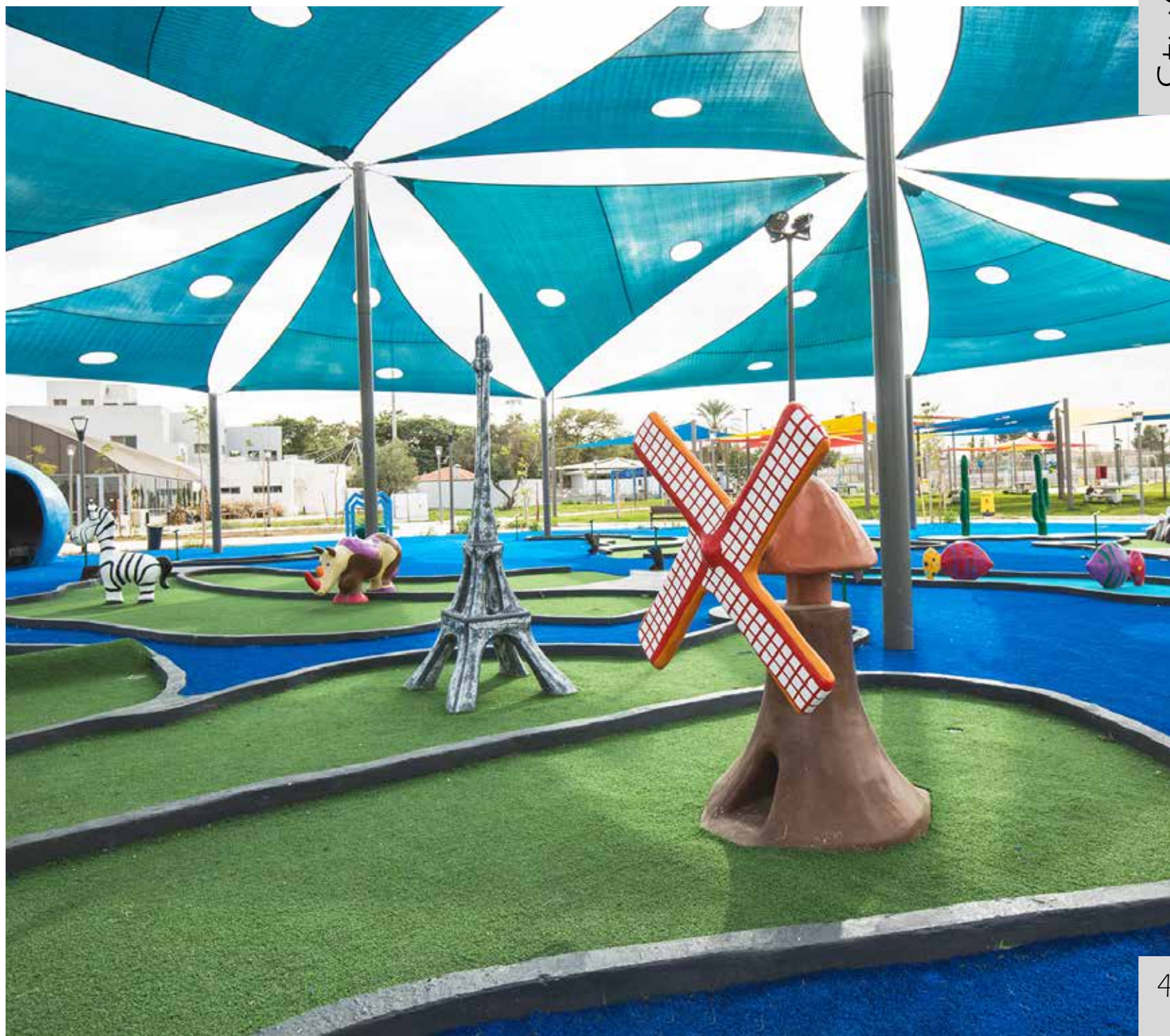




MINI GOLF "WORLD MAP"

Ofakim

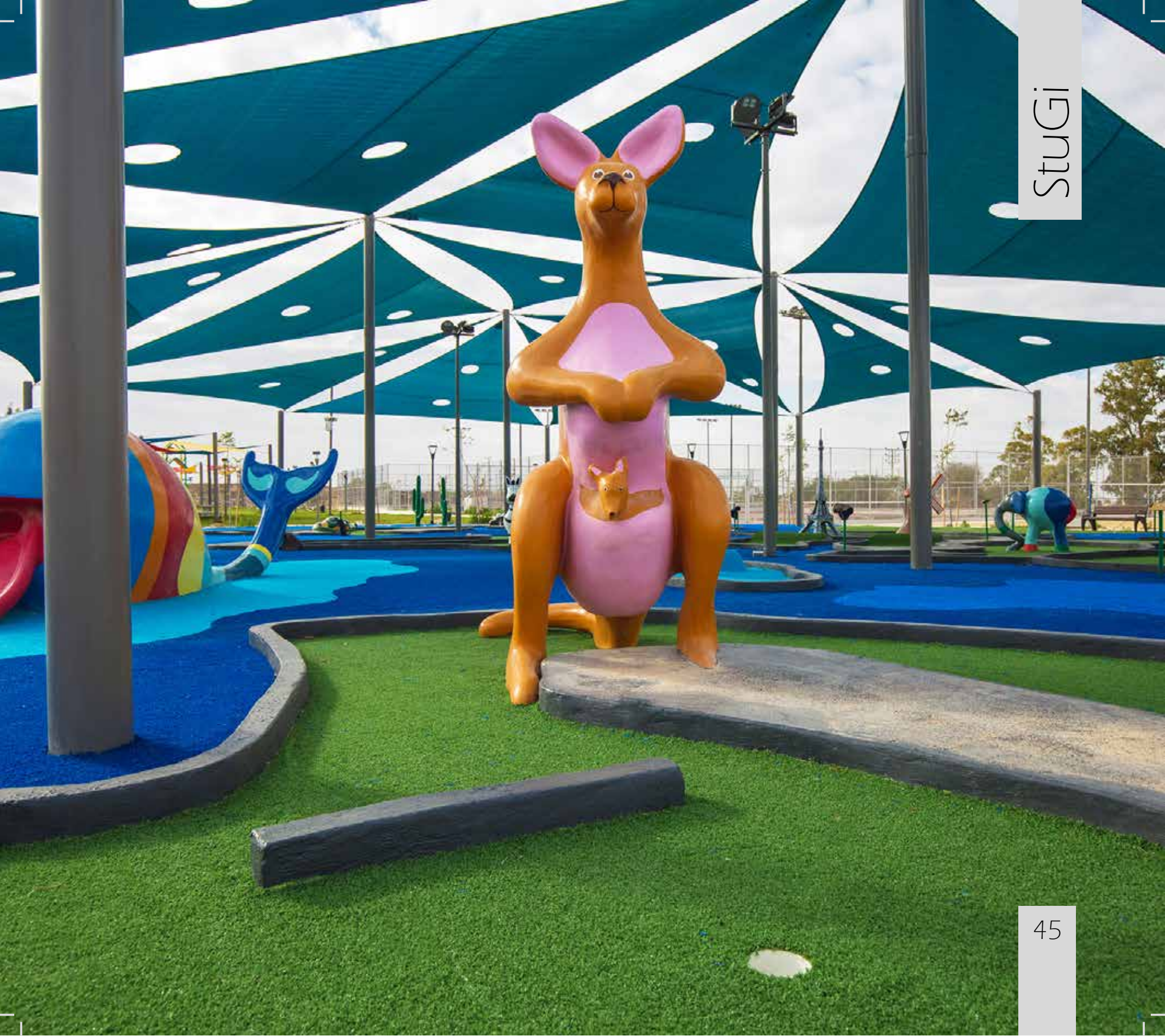




MINI GOLF “WORLD MAP”

Ofakim





MINI GOLF “WORLD MAP”

Ofakim





MOUNTAINS

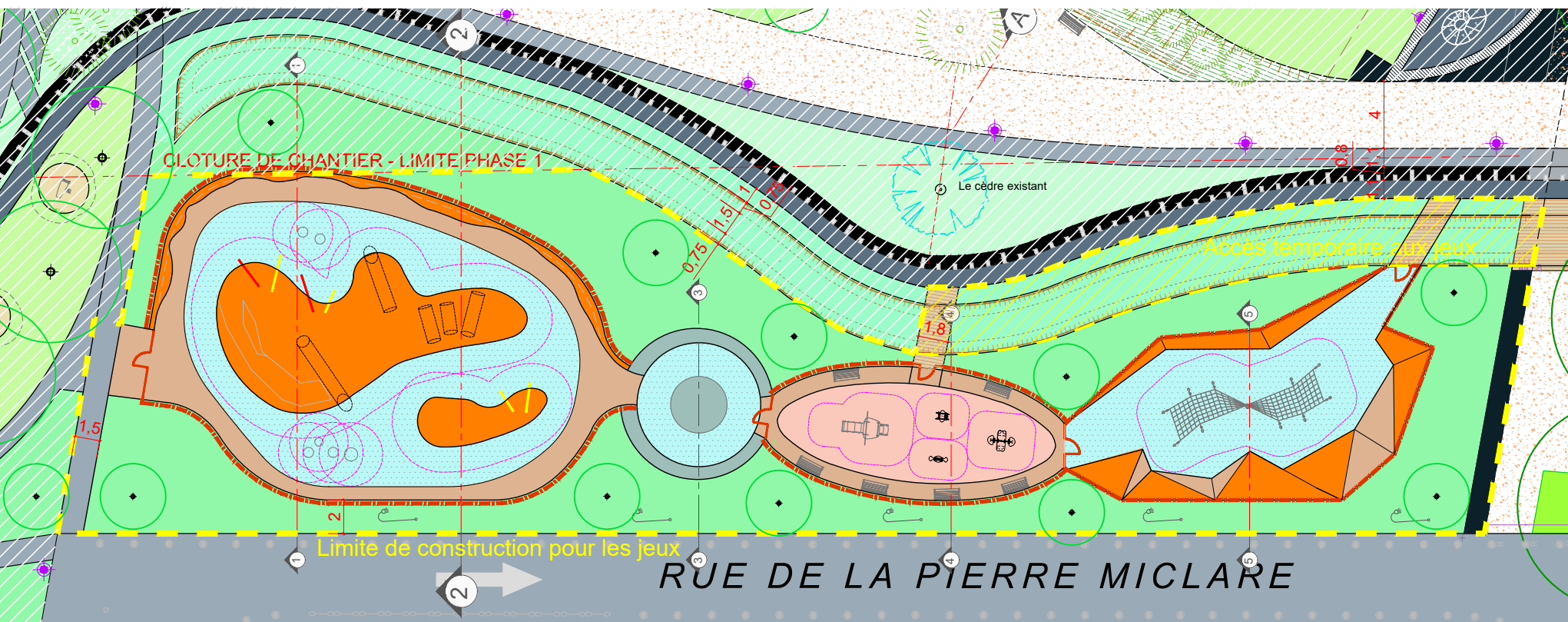
Paris

Welcome to the city of Paris

In the heart of the Parisian suburb in Cergy, StuGi team met the challenge of creating the peaks of Mont Blanc in an urban setting. The park was designed to create an extreme park of the peaks of the mountain along with a rope park.

Stainless steel pipes built specifically for the size of the facility, designed handholds and the color of the rocks painted in winter colors in white, and a black summer of basalt peaks, Created a challenging and spectacular park in the heart of the neighborhood.

Landscape Architecture: Bernard Poulet



MOUNTAINS

Paris



Landscape Architecture: Bertrand Paulet



MOUNTAINS

Paris





MOUNTAINS

Paris





CLIMBING ROCK

Paris





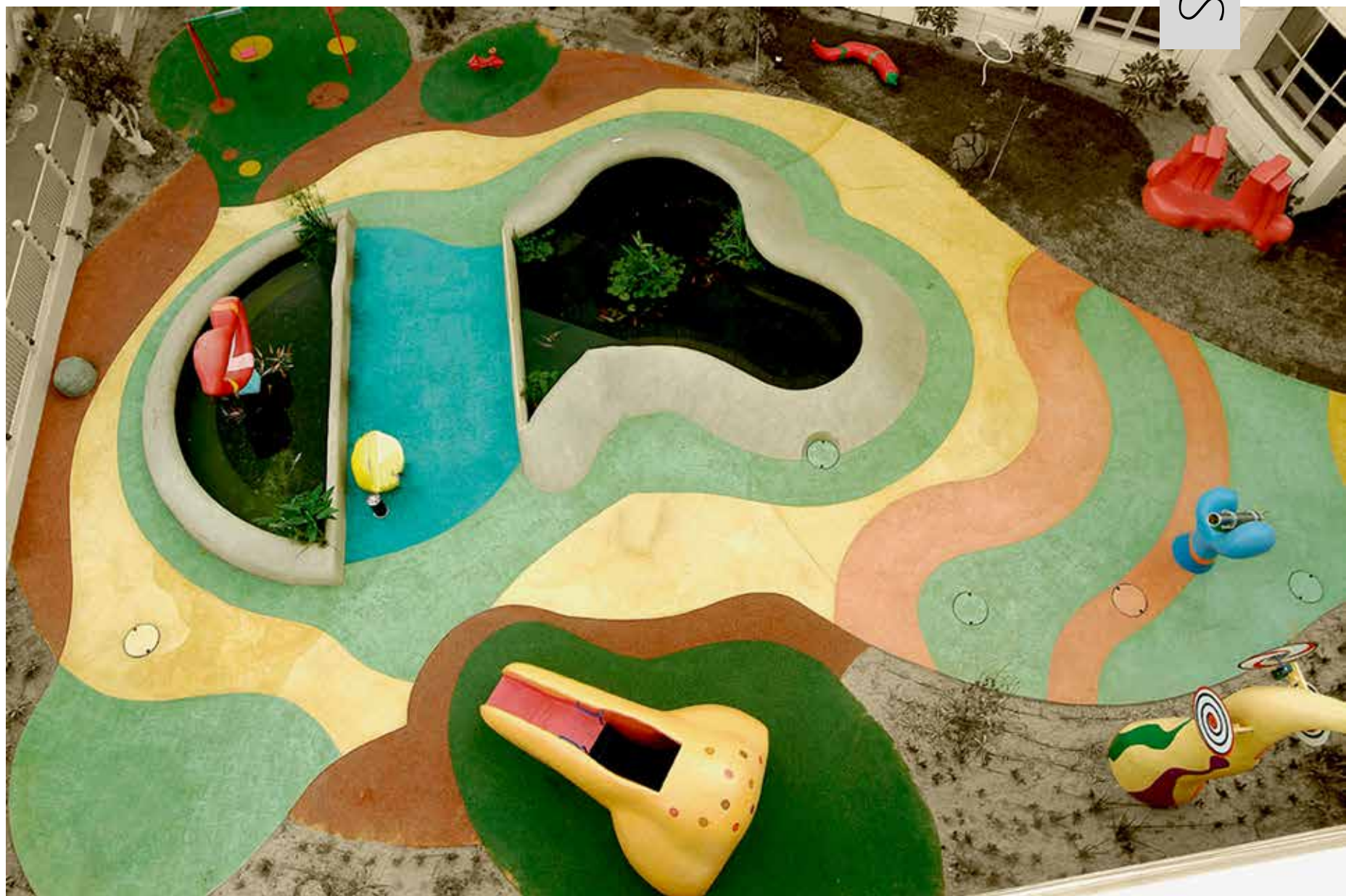
GARDEN OF SENSES

Tel HaShomer

The senses are a most fascinating and varied subject, and without question it provides interest and experience as the theme of the garden alone. The Garden of the Senses is primarily intended for those who are sick with children and youth, and therefore speaks in their language – a language of developed imagination, original thinking and a gaze that is not satisfied with the obvious.

Visitors to the garden are exposed to an experience that requires the use of the five senses: taste, smell, palpation, vision and hearing, and above all they enter into an exciting experience of sensory illusion; An experience that stimulates imagination, inspiration and thought while at the same time relaxing and caressing – “We, we do not see things as they are, but, as we are, everything in the eyes of the beholder ...” (Anaías Nin)”

Landscape Architecture: Kav Banof Ltd





StuGi 60



GARDEN OF SENSES

Tel HaShomer





GARDEN OF SENSES

Tel HaShomer





GARDEN OF SENSES

Tel HaShomer





Sculptures



CREATURE

Holon



StuGi 70



TRUMPET

Rehovot



StuGi 72



FRIENDS

Beer Sheba





MOON AND STARS

Petah Tikva





BAT YAM ENTRANCE





MOOMINS

Holon





HELICOPTER

Gedera



MUSICIANS

Kiryat Ono

StuGi



TURTLE

Herzliya



DUCKS

Herzliya



RABBIT

Modi'in



FROG

Herzliya



Landscape Architecture: Julie Levy-Peled

MOM

Tel HaShomer



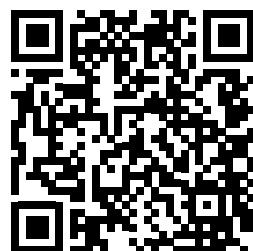
FLOWERS

Herzliya

StuGi



Expo Art



BEN GURION AIRPORT

Tel-Aviv

As part of the conversion of Terminal 1 to the low cost flights, the terminal was redesigned By StuGi to serve passengers on international flights in the spirit of Ben-Gurion Boulevard. In the terminal are street signs and colorful figures, as well as a row of trees that combines interior and exterior. Among other things, this design is designed to cover the overcrowding that will be particularly busy days, since the building itself was not expanded

A small terminal required a design that would allow artificial spacing of the place An old terminal – an atmosphere of renewal was requested design of a new color and freshness. So ... welcome aboard and come flying with StuGi



BEN GURION AIRPORT

Tel-Aviv



StuGi 92





BEN GURION AIRPORT

Tel-Aviv



StuGi 94





BEN GURION AIRPORT

Tel-Aviv









